

# Refilling Instructions

for Hewlett-Packard C6658 “58” Photo Cartridges

## CONTENTS:

- 30ml Bottle photo magenta ink - yield: equivalent to 6 “58” cartridges
- 30ml Bottle photo black ink - yield: equivalent to 6 “58” cartridges
- 30ml Bottle photo cyan ink - yield: equivalent to 6 “58” cartridges
- Fill hole location template
- Fill hole puncturing tool
- 3cc Dispenser syringes with blunt needle
- 30 Fill hole seals
- Instruction sheet
- Cotton wipe

Figure 1



Figure 2

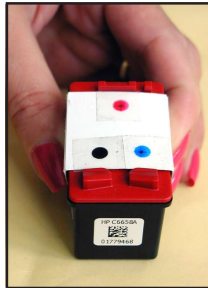


Figure 3

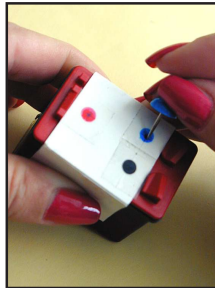


Figure 4



Figure 5



1. Cover work surface with a few layers of newspaper to protect against accidental spills.
2. Place cartridge on table with print on label facing you. (See Figure 1).
3. Place template over label so that single hole in template is farther away from you. (See Figure 2).
4. Using the fill hole puncturing tool, push it through all three of the colored holes so that the label is punctured in three places. (See Figure 3). Set the template in front of you so you will know the correct color sequence of the fill holes.
5. Uncap the bottle containing the color of ink that you just ran out of. Using the syringe with needle affixed, draw 3ml of ink into the syringe.
6. Insert the needle as far as it will go into the correct color fill hole, draw it out about 1/4” (7mm). Slowly inject the ink into the cartridge. Dispense ink until the syringe is empty or ink starts to back up from the fill hole. (See Figure 4).
7. Withdraw the needle and set the syringe aside.
8. Use the cotton wipe to absorb any ink from around the fill hole.
9. Place one of the fill hole seals over the fill hole you just filled through. (See Figure 5).
10. Rinse the syringe and needle thoroughly so it can be used for the next color of ink.
11. Repeat steps 5 through 10 for the other two colors. (Note: Be careful to stop injecting ink as soon as it starts to back up from the fill hole. The cartridge may still contain some ink of the second and third colors, so that you will not be able to dispense all of the ink in the syringe. If any ink is left in the syringe return it to the ink bottle for future use.
12. Return all remaining components to the box for future use.
13. Follow the instruction on the back of this sheet to reset the ink level monitor on your computer so that it reads “FULL” again.

Note: If refilling a previously refilled cartridge, simply peel off the fill hole seals and proceed to step 5.

IF YOU HAVE ANY QUESTIONS OR ENCOUNTER ANY DIFFICULTY IN USING THIS PRODUCT, PLEASE CONTACT:

**REPEAT-O-TYPE**  
MANUFACTURING CORPORATION  
ESTABLISHED 1931

665 State Highway 23 • Wayne, NJ 07470-6892 U.S.A. • (973) 696-3330 • (800) 288-3330  
Fax: (973) 694-7287 • Email: help@repeatotype.com • www.repeatotype.com